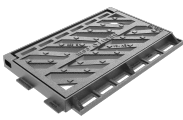
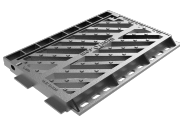


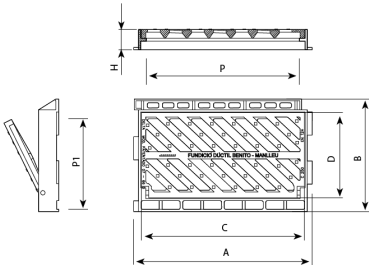
[R0766V](#)



[R0745](#)



[R0766](#)



Delta is designed to support soft traffic. Perfect for installing on roads with an ADT of 500 to 1.000, particularly hard shoulders and ditches.

- Made from spheroidal graphite ductile cast iron, according to ISO 1083 (Type 500-7) and standard EN 1563.
- Compliant with the European standard UNE EN-124.
- Hinged theft-proof cover.
- With chain-linked flaps for a drainage duct.
- Diagonal bar design (anti-bike) and rear pipe to guarantee high absorption.
- Metal non-slip surface.
- Coated with non-toxic, non-flammable and non-polluting water-soluble black paint.

| REF.   |      | A   | B   | C   | D   | H  | P   | P1  | dm2 | UN. |
|--------|------|-----|-----|-----|-----|----|-----|-----|-----|-----|
| R0745  | C250 | 500 | 305 | 455 | 265 | 35 | 425 | 230 | 8   | 102 |
| R0766  | C250 | 625 | 395 | 565 | 300 | 40 | 530 | 265 | 8   | 80  |
| R0766V | C250 | 620 | 390 | 565 | 300 | 70 | 530 | 265 | 8   | 20  |
| R0775  | C250 | 790 | 335 | 745 | 250 | 40 | 715 | 230 | 10  | 51  |

[Project sheet](#) | [CAD](#) | [HD image](#)

The constant improvement and evolution of our products may result in some modifications of the technical specifications and characteristics of the products without prior notice.