



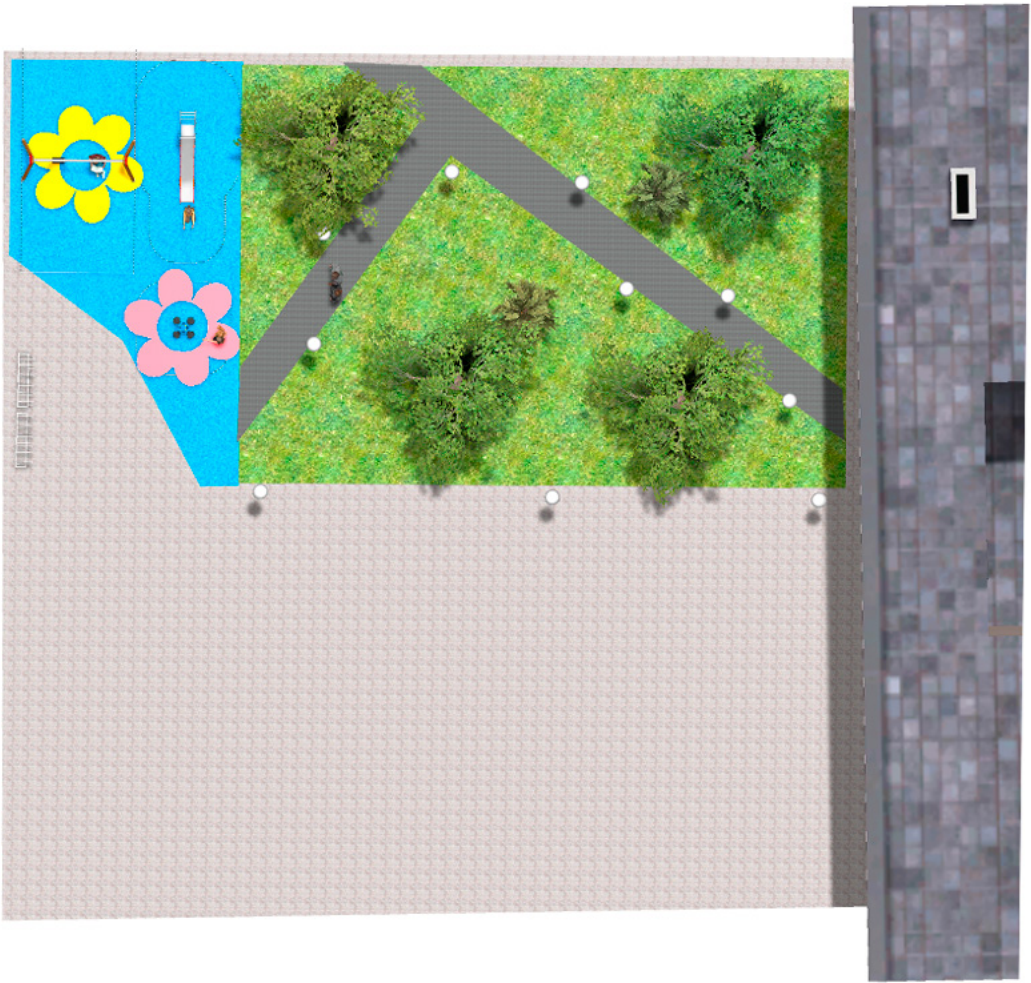
## PROJECT

PROJ-026-2021

Surface: 75 m<sup>2</sup>

Email: [info@benito.com](mailto:info@benito.com)

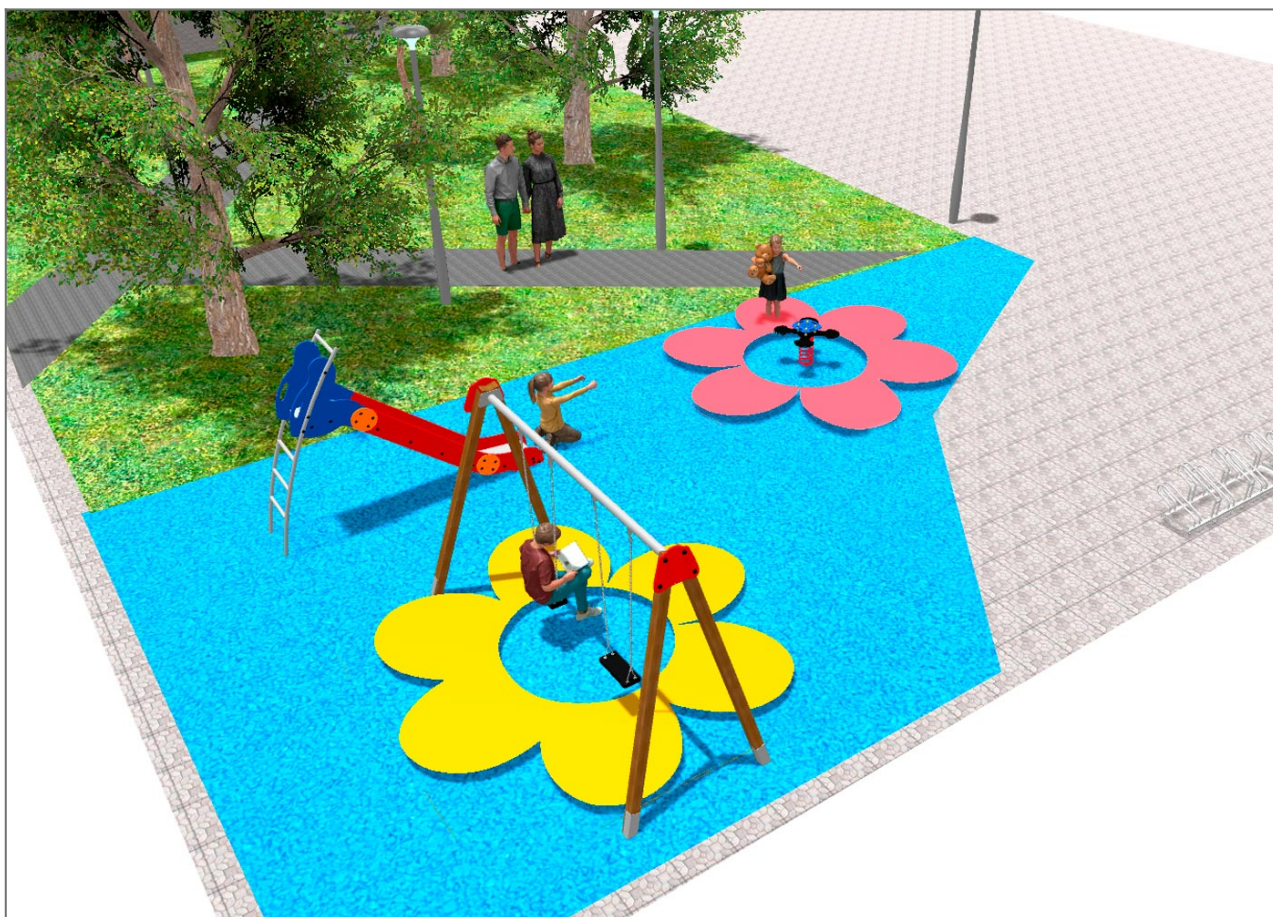
Telephone: +34 93 852 1000





# BENITO




—Playground Equipment





**BENITO**  
-Playground Equipment



Product	Description
<p>JT05</p> 	<p><b>Fast Panels, HDPE:</b> high-density polyethylene characterised by its resistance to chemical abrasives. As a polymer, it is unaffected by corrosion. Due to its light elastic nature, it offers high resistance to impact, making it very difficult to break.</p> <p><a href="#">Data Sheet</a> <a href="#">Certificate</a></p>
<p>JL1520000</p> 	<p><b>MADERA 2 Flat</b> Swings for children made of different materials such as wood and steel. Resistant to abrasion, corrosion and bad weather conditions.</p> <p><a href="#">Data Sheet</a> <a href="#">Certificate</a> <a href="#">Certificate Conformity</a></p>
<p>JFS06</p> 	<p><b>Flop</b> Fun and educative spring swing for children. Made of resistant materials according to the EN1176 standard.</p> <p><a href="#">Data Sheet</a> <a href="#">Certificate</a> <a href="#">Certificate Conformity</a></p>