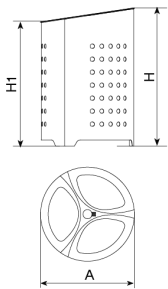
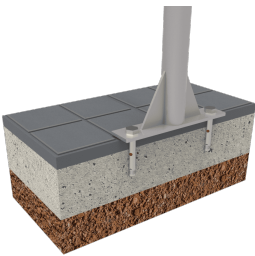




The Doria litter bin is specifically designed for the waste separation of recyclable material. Ashtray included. Structure made of 2mm perforated steel sheet with a reinforced ring. Structure treated with cataphoresis and black oxiron paint coating. Upper lid made of AISI 304 stainless steel with 3 holes, thus preventing people from throwing garbage bags inside.



Ref.	Ø A	H	H1
PA686	620	910	820



Anti-vandalism triangular lock.

Internal fixing system for plastic bags and galvanised sheet separators.

Recommended anchoring: by means of three M10 expansion bolts depending on the surface and the project.



V. 2024-02-23 | The constant improvement and evolution of our products may result in some modifications of the technical specifications and characteristics of the products without prior notice.