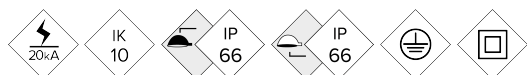


ILVL

Luminaire

VIALIA LIRA



Classic residential luminaire ideal for urban residential areas (roads, squares, green spaces...). Compact profile and internal LED cooling system. Mounting by means of a ball joint system, vertical fixing bracket or suspended. Power up to 100W thanks to its high dissipation capacity. High resistance and reliability. Ready for any intelligent lighting control solutions.

MAIN FEATURES:

- High efficacy. Up to 142 lm/W net
- Tool-less opening
- 18 light distribution curves
- Zhaga Standard (Book 15)
- Ready 4IoT. Ready for any intelligent lighting control solution

APPLICATIONS:

- Residential areas
- Squares and green spaces
- Roads

[Project sheet](#) | [CAD](#) | [Catalogue](#) | [HD image](#)

**BENITO
NOVATILU**

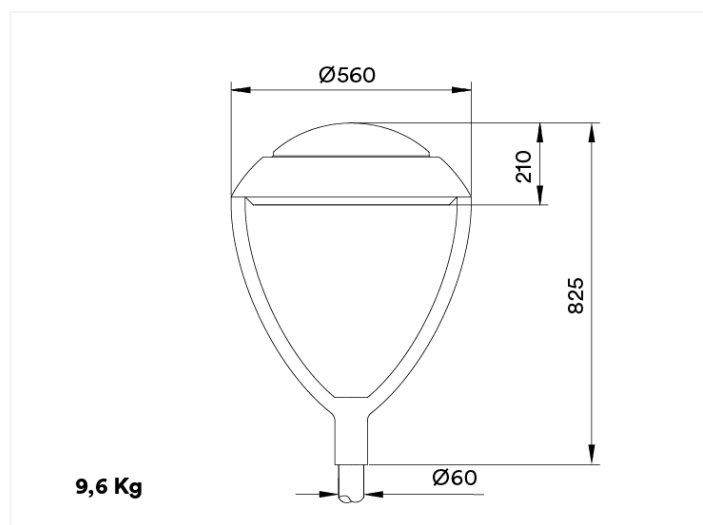
info@benito.com

tel. +34 93 852 1000 / +34 961 401 000

SPECIFICATIONS :

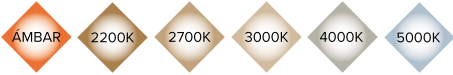
| | |
|------------------------------------|---|
| Housing material: | High pressure die-cast aluminium EN AC-43000, EN AC-43100, EN AC-43400, EN AC-44100, EN AC-47100 according to the UNE EN 1706 standard |
| Diffuser (optic system enclosure): | 5mm tempered safety glass. UV filter |
| Fixing elements: | Stainless steel 18/8 - AISI 304 |
| Housing: | Double compartment: driver / LED module |
| Sealing gaskets: | Silicone foam |
| IP rating (luminaire): | IP66 |
| IP rating (optic system): | IP66 |
| IK rating (impact resistance): | IK10 |
| LEDs thermal dissipation: | Thermal dissipation through finless luminaire body, without conductive fluids. Passive convection dissipation ensuring thermal contact with the LED modules through a high-conductivity thermal transfer material |
| Anti-condensation valve: | Pressure-balancing valve to ensure moisture release, avoid condensation and maintain the luminaire IP tightness |
| Finish: | Polyester powder paint coating, electrostatically sprayed and sublimated in the oven. Resistant to corrosion |
| Colour: | Microtextured black. Optional: other colours |
| Mounting: | Post - Top Ø60mm |
| Tilt range: | |
| Maintenance: | Easy, tool-less opening. Modular concept for easy component replacement: LEDs, drivers, SPD |
| Recommended mounting height: | 4 - 6 m |
| Driver: | Constant current adjustable and programmable driver. Embedded in the luminaire, pre-wired on a galvanised steel plate |
| Driver control: | Dimmable driver 0-10V. Programmable on 5 levels. Optional: DALI 2. Includes the characteristics of Wireless, AOC, MTP, DTL |
| Dimming options: | <ul style="list-style-type: none"> - Autonomous multiple-level dimming or virtual midnight - Ready4IoT - Dimming by main voltage - Line switch |
| Surge protection device (SPD): | Type 2, 10kV and 20kA transient surge protector. Series connection with thermofuse disconnecter for a more effective protection at the end of its service life |

DRAWING:



INSTALLATION:





TECHNICAL DATA:

| REF. | N° LEDs | Power W | I Driver mA | Real luminous flux (T) =85°C | | Initial luminous flux (T) =25°C | | |
|-------------|---------|---------|-------------|------------------------------|---------------|---------------------------------|---------------|-----|
| | | | | Flux lm | Efficacy lm/W | Flux lm | Efficacy lm/W | |
| Vialia Lira | 16 | 20 | 375 | 2842 | 142 | 3240 | 162 | |
| | ILVL60 | 16 | 40 | 750 | 5642 | 141 | 6432 | 161 |
| | 16 | 60 | 1125 | 8400 | 140 | 9576 | 160 | |
| | 32 | 60 | 563 | 8520 | 142 | 9713 | 162 | |
| ILVL120 | 32 | 80 | 750 | 11280 | 141 | 12859 | 161 | |
| | 32 | 100 | 938 | 14000 | 140 | 15960 | 160 | |

LEDs: 5050

Nominal efficacy LED: 172 lm/W.

Maximum LED current: 1000 mA.

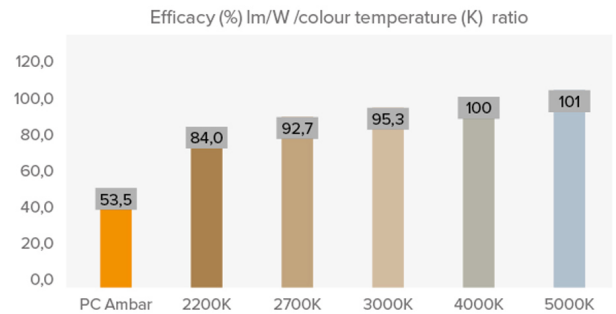
LED current = Driver current/2

Lifetime L90B10: >100,000 hours.

Luminous flux and efficacy at 4000°K and CRI>70.

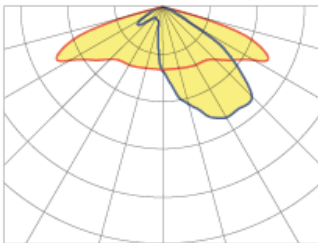
Luminous flux tolerance < +/-3%.

Values may be subject to change due to LED binning.

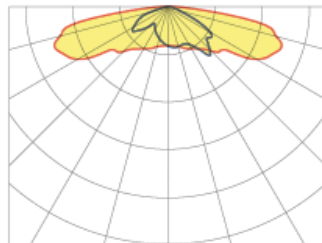


PHOTOMETRY:

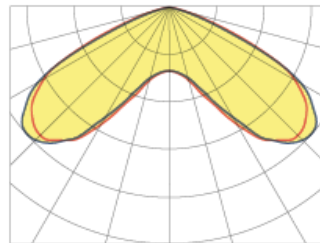
Super-Extensive Asymmetric (AE)



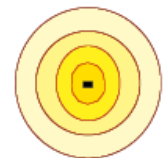
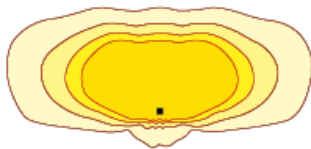
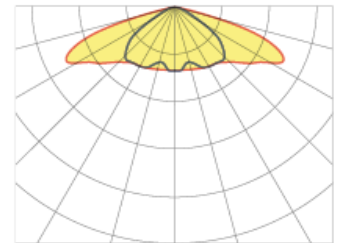
Extensive Asymmetric (A3)



Super-Extensive Circular Symmetric (SE)



Super-Extensive Asymmetric (S3)



*Check the other available light distribution curves

LEDs MODULE:

| | | |
|---------------------------------|---|--|
| LEDs module: | BENITO-NOVATILU Zhaga standard for 8, 12 and 16 LEDs. Check colour temperature, CRI and light distributions | |
| Replaceable module: | Yes | |
| LED: | 5050 | |
| Number of LEDs: | 16-32 | |
| PCBs format: | 2 Zhaga (Book 15) 2x4 or 2 Zhaga (Book 15) 2x8 | |
| LED nominal efficacy: | 172 | |
| Colour temperature: | PC Amber, 2K2, 2K7, 3K, 4K, 5K | |
| Colour rendering index CRI: | >70 (optional >80) | |
| Average LED useful time L90B10: | L90B10 >100,000 hours | |

OPTIC SPECIFICATIONS:

| | | |
|---|---|-------|
| Optic system: | PMMA lenses 2x2 | |
| Light distributions: | 18 light distribution curves | |
| Upward light output ratio ULOR: | 0% | |
| Downward light output ratio DLOR: | 100% | |
| Glare index: | Between D5 and D6 (depending on the light distribution) | |
| Luminous intensity category: | Between G*4 and G*6 (depending on the light distribution) | |
| Luminous flux CIE n°3: | >95% | |
| Photobiological safety: | RG0 (exempt of risk) | |
| Initial luminous flux Tj=25°C (up to): | lm | 15960 |
| Initial luminaire efficacy Tj=25°C (up to): | lm/W | 162 |
| Real luminous flux Tj=85°C (UNE EN 13032-4) (up to): | lm | 14000 |
| Real luminaire efficacy Tj=85°C (UNE EN 13032-4) (up to): | lm/W | 142 |

ELECTRIC SPECIFICATIONS:

| | | |
|--|--|-------------------------------|
| Nominal maximum power (LEDs): | W | 90 |
| Maximum power consumed (luminaire): | W | 100 |
| Power range: | W | 20 - 100W |
| Maximum current of LED: | mA | <500 (<50% I _{max}) |
| Power supply protection classes IEC: | Class I and II | |
| Surge protection device (SPD): | Type 2, 10kV and 20kA transient surge protector. Series connection with thermofuse disconnecter for a more effective protection at the end of its service life | |
| Common and differential mode protection (SPD) Udc: | kV | 10 and optional NTC |
| Max current (8/20) (SPD): | kA | 20 |
| Thermal phase disconnection (SPD): | Yes | |
| Input voltage: | Vac | 220-240 |
| Input voltage (max rate): | Vac | 198-264 |
| Input frequency: | Hz | 47-63 |
| Starting current: | A | <65 |
| Duration of the starting voltage peak: | ms | <0.3 |
| Driver efficacy: | >90% | |
| Power factor 100% consumption: | >0.98 | |
| Power factor 50% consumption: | >0.95 | |
| Total harmonic distortion (THD): | <10 | |
| Power consumption on standby mode: | W | <0.4 |
| Energy class: | A++ IPEA>1.15 | |

OPERATING CONDITIONS:

| | | |
|---|----------|-------------------------------------|
| Average LED useful time L90B10: | >100,000 | |
| Average driver useful life to Tp <70°C: | 100,000 | |
| Average luminaire useful life L80B10 (TM-21): | | |
| Ambient temperature (Ta): | °C | From -35°C to +50°C |
| Aerodynamic resistance (CxS): | m2 | 0.1 |
| Vibration test (15Hz 3 axis): | | |
| Wind load test: | | |
| Guarantee: | years | 5 years (extensible up to 10 years) |

PACKAGING DIMENSIONS:

| | | |
|------------------------------|----|-------------|
| Net weight | kg | 13 |
| Gross weight | kg | 14.5 |
| Luminaire dimensions (LxWxH) | mm | 560x560x825 |
| Packaging dimensions (LxWxH) | mm | |
| Pieces per box | | 1 |
| Quantity per container 20ft | | |
| Quantity per container 40ft | | |

CERTIFICATES:

Security certificates:

EN 60598-1 / EN 60598-2-3 / EN 62493 / IEC 62471

EMC certificates:

EN 55015 / EN 61000-3-2 / EN 61000-3-3 / EN 61347-2-13 / EN 61347-1 / EN 62384

Other certifications:

IEC 62262 / EN 13032-4 / EN 62717 / EN 6272-1 / EN 6272-2-1 / EN 61643-11