



## PROJECT

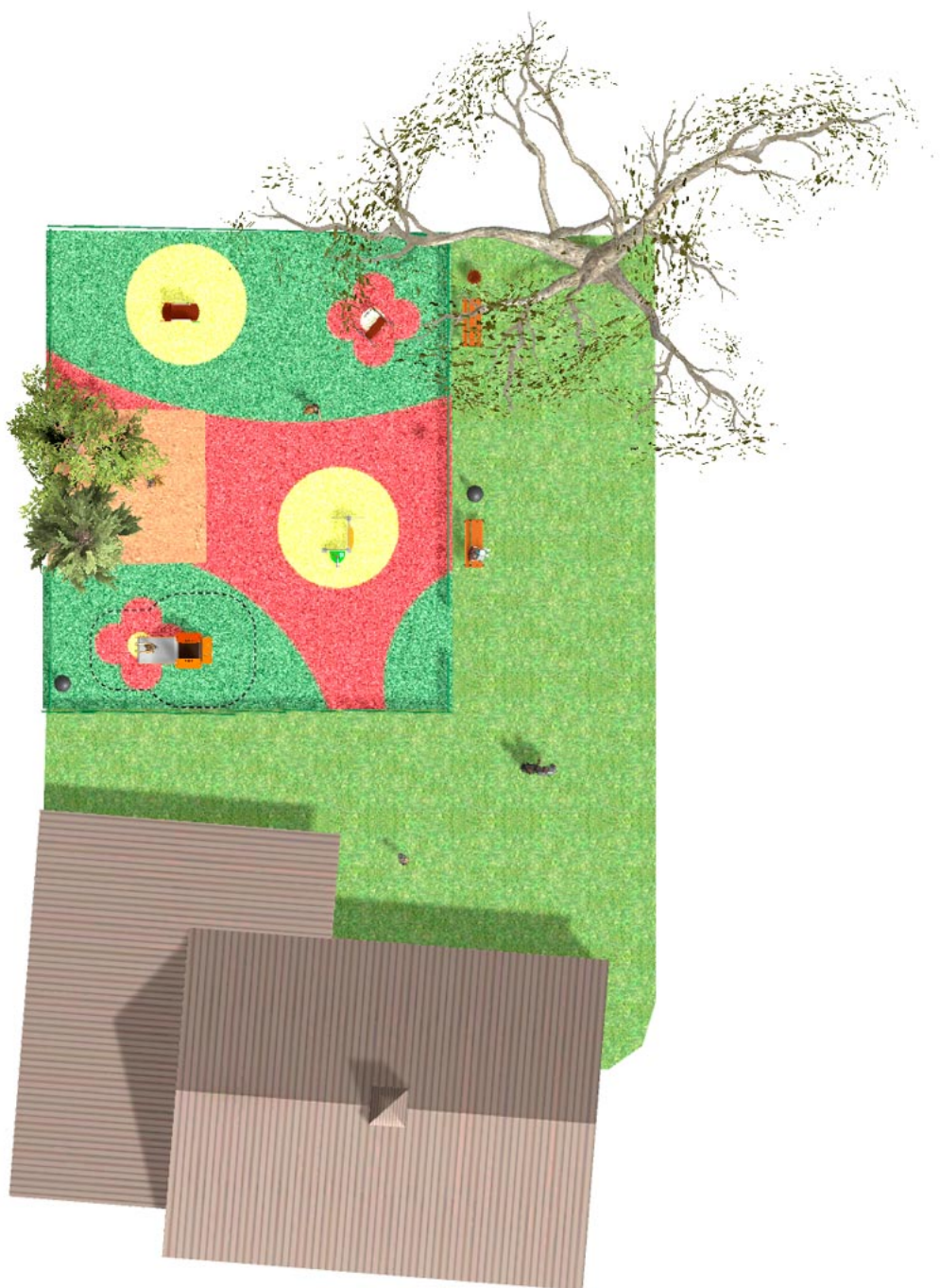
PROJ-158-2021

Surface: 230 m<sup>2</sup>

Email: [info@benito.com](mailto:info@benito.com)

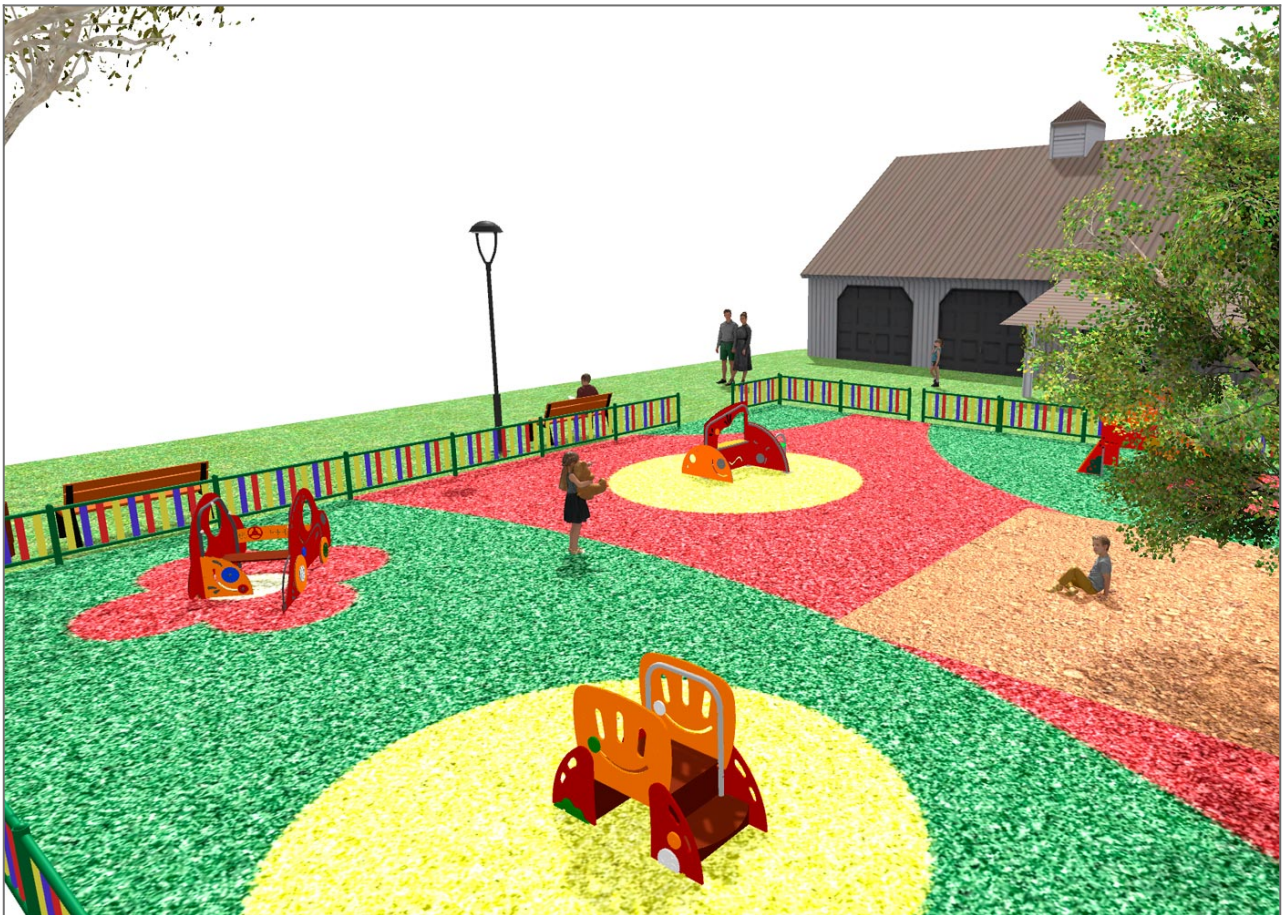
Telephone: +34 93 852 1000







**BENITO**  
-Playground Equipment









**BENITO**  
-Playground Equipment





Product	Description
<p>JG10</p> 	<p><b>Gibo</b>  <b>Structure, Metal:</b> Ø35mm stainless steel AISI-304 posts. 2mm thick AISI 304 polished stainless steel slide surface curved and molded in one piece.</p> <p><a href="#">Data Sheet</a> <a href="#">Certificate</a></p>
<p>JG02</p> 	<p><b>Kido</b>  <b>Structure, Metal:</b> Ø35mm stainless steel AISI-304 posts. 2mm thick AISI 304 polished stainless steel slide surface curved and molded in one piece.</p> <p><a href="#">Data Sheet</a> <a href="#">Certificate</a></p>
<p>JG08</p> 	<p><b>Pas</b>  <b>Structure, Metal:</b> Ø35mm stainless steel AISI-304 posts. 2mm thick AISI 304 polished stainless steel slide surface curved and molded in one piece.</p> <p><a href="#">Data Sheet</a> <a href="#">Certificate</a></p>
<p>JG09</p> 	<p><b>Dip</b>  <b>Structure, Metal:</b> Ø35mm stainless steel AISI-304 posts. 2mm thick AISI 304 polished stainless steel slide surface curved and molded in one piece.</p> <p><a href="#">Data Sheet</a> <a href="#">Certificate</a></p>